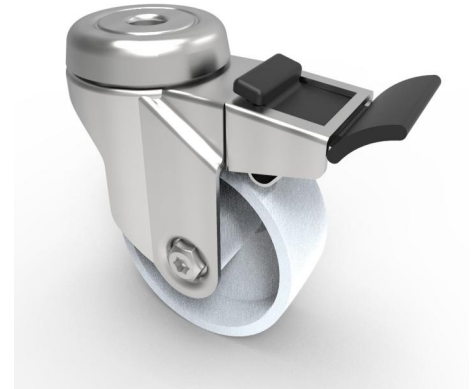


## Nylon Bolt Hole Swivel Castor Brake 75mm 70kg Load

**Product code: BZM75NYBH12SWB**

Pressed steel swivel castor with a 12mm bolt hole fitted with a white nylon wheel with plain bore and a total lock brake. Wheel diameter 75mm, tread width 32mm, overall height 109mm, Load capacity 70kg.



Diameter (mm)	75
Fixing Option	Bolt Hole
Castor Type	Swivel with Total Lock Brake
Head Dia (mm)	57
Height (mm)	109
Bearing Type	Plain
Swivel Radius (mm)	95
Wheel Material	Nylon
Colour / Shore Hardness	White Nylon
Fork Thickness (mm)	2
Temperature Resistance	-15 °C TO +80 °C
To Suit Fixing Bolt (mm)	12
Tread (mm)	32
Load Capacity (kg)	70