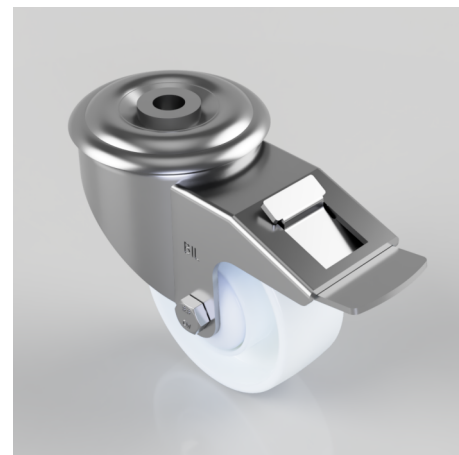


Nylon Bolt Hole Swivel Castor Brake 80mm 150kg Load

Product code: BZMM80NYBJBH12SWB

Pressed steel swivel castor with a 12mm bolt hole fitted with a white nylon wheel with single ball bearing and hub caps and a total lock brake. Wheel diameter 80mm, tread width 32mm, overall height 105mm, Load capacity 150kg.



Diameter (mm)	80
Castor Type	Swivel with Total Lock Brake
Fixing Option	Bolt Hole
Height (mm)	105
Wheel Material	Nylon
Colour / Shore Hardness	White Nylon
Temperature Resistance	-30 °C TO +80 °C
Bearing Type	Ball
Load Capacity (kg)	150
Tread (mm)	32
Swivel Radius (mm)	112
Head Dia (mm)	76
Fork Thickness (mm)	2.5
To Suit Fixing Bolt (mm)	12

BIL GROUP LTD

Porte Marsh Road, Calne, Wiltshire, SN11 9BW

Registered in England No: 2603821

VAT Reg: GB572705729

