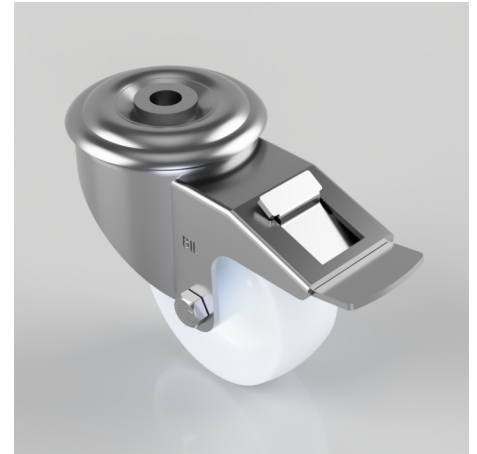


## Nylon Bolt Hole Swivel Castor Brake 80mm 150kg Load

**Product code: BZMM80NYBH12SWB**

Pressed steel swivel castor with 12mm bolt hole fixing fitted with a white nylon wheel and plain bore and total lock brake. Wheel diameter 80mm, tread width 30mm overall height 105mm. Load capacity 150kg.



|                          |                              |
|--------------------------|------------------------------|
| Diameter (mm)            | 80                           |
| Castor Type              | Swivel with Total Lock Brake |
| Fixing Option            | Bolt Hole                    |
| Height (mm)              | 105                          |
| Wheel Material           | Nylon                        |
| Colour / Shore Hardness  | White Nylon                  |
| Temperature Resistance   | -30 °C TO +80 °C             |
| Bearing Type             | Roller                       |
| Load Capacity (kg)       | 150                          |
| Tread (mm)               | 30                           |
| Swivel Radius (mm)       | 112                          |
| Head Dia (mm)            | 76                           |
| Fork Thickness (mm)      | 2.5                          |
| To Suit Fixing Bolt (mm) | 12                           |

### BIL GROUP LTD

Porte Marsh Road, Calne, Wiltshire, SN11 9BW

Registered in England No: 2603821

VAT Reg: GB572705729

