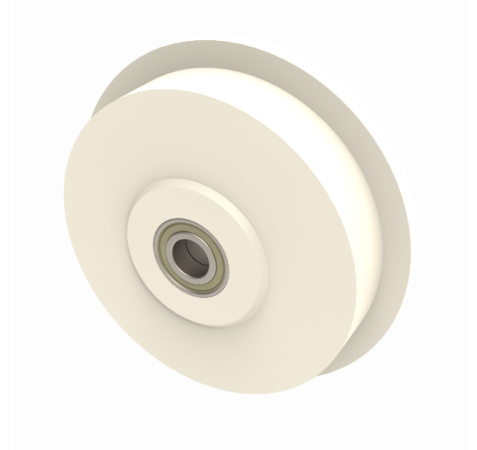


Nylon Flanged 250mm Ball Bearing Wheel 2100kg Load

Product code: BZH250WNYSFBJM30

POA Flanged nylon wheel with ball bearings. Wheel diameter 250mm, outer flange 300mm, flange width 50mm, total tread width 65mm bore size 30mm, hub length 70mm. Load capacity 2100kg. ****MANUFACTURED TO ORDER****



Wheel Material	Cast Nylon
Colour / Shore Hardness	White Cast Nylon / 60 - 90 Shore D
Diameter (mm)	250
Flanged Diameter (mm)	300
Flange Width (mm)	50
Load Capacity (kg)	2100
Bearing Type	Ball
Bore Size (mm)	30
Total Tread (mm)	65
Tread (mm)	50
Hub Width (mm)	70
Temperature Resistance	-30 °C TO +80 °C