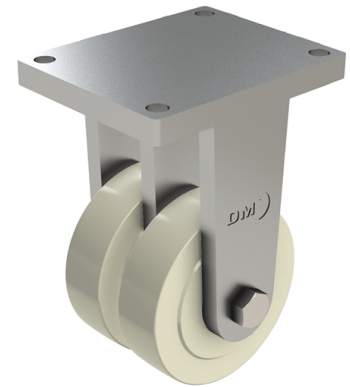


Nylon Plate Fixed Castor 100mm 2000kg Load

Product code: TF100NYBJ



POA Heavy duty fabricated twin wheel fixed castor fitted with 2 x cast machined nylon wheels with ball bearings, Wheel diameter 100mm, Tread width 40mm x 2, Overall height 165mm, Top plate 175mm x 140mm, Hole centres 140mm x 105mm, Load capacity 2000kg ****MANUFACTURED TO ORDER****

Diameter (mm)	100
Fixing Option	Plate
Castor Type	Fixed
Bearing Type	Ball
Plate Size (mm)	175 X 140
Hole Centres (mm)	175 X 140
Height (mm)	165
To Suit Fixing Bolt (mm)	14
Wheel Material	Nylon
Colour / Shore Hardness	White Nylon
Temperature Resistance	"-30 °C TO +80 °C
Tread (mm)	2 x 40
Load Capacity (kg)	2000

BIL GROUP LTD

Porte Marsh Road, Calne, Wiltshire, SN11 9BW

Registered in England No: 2603821

VAT Reg: GB572705729

