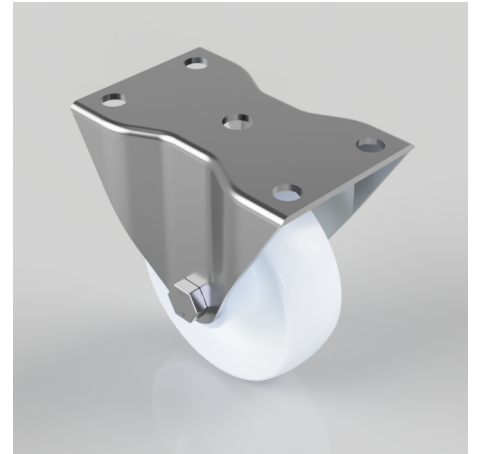


## Nylon Plate Fixed Castor 100mm 250kg Load

**Product code: BZHF100NYBLP**

Fixed castor with a top plate fixing fitted with a white nylon wheel with single ball bearing and retainer caps. Wheel diameter 100mm, tread width 36mm, overall height 127mm, plate size 122mm x 78mm, hole centres 100mm x 48mm. Load capacity 250kg.



|                          |                  |
|--------------------------|------------------|
| Diameter (mm)            | 100              |
| Castor Type              | Fixed            |
| Fixing Option            | Plate            |
| Height (mm)              | 127              |
| Wheel Material           | Nylon            |
| Colour / Shore Hardness  | White Nylon      |
| Temperature Resistance   | -30 °C TO +80 °C |
| Bearing Type             | Roller           |
| Load Capacity (kg)       | 250              |
| Tread (mm)               | 36               |
| Plate Size (mm)          | 122 x 77         |
| Hole Centres (mm)        | 100 x 48         |
| Top Plate Thickness (mm) | 3                |
| Fork Thickness (mm)      | 3                |
| To Suit Fixing Bolt (mm) | 10               |