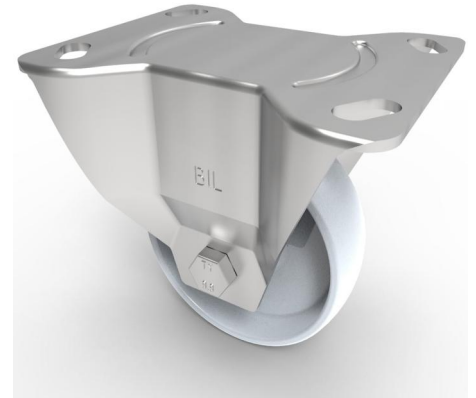


## Nylon Plate Fixed Castor 100mm 270kg Load

**Product code: BZEHF100NYLP**

Pressed steel fixed castor with a top plate fixing fitted with a white nylon wheel with a plain bore. Wheel diameter 100mm, tread width 32mm, overall height 129mm, plate size 135mm x 110mm, hole centres 105mm x 80mm or 116mm x 93.5mm. Load capacity 270kg.



|                          |                  |
|--------------------------|------------------|
| Diameter (mm)            | 100              |
| Castor Type              | Fixed            |
| Fixing Option            | Plate            |
| Height (mm)              | 128              |
| Wheel Material           | Nylon            |
| Colour / Shore Hardness  | White Nylon      |
| Temperature Resistance   | -30 °C TO +80 °C |
| Bearing Type             | Plain            |
| Load Capacity (kg)       | 270              |
| Tread (mm)               | 32               |
| Plate Size (mm)          | 135 x 110        |
| Hole Centres (mm)        | 105/116 x 80/64  |
| Top Plate Thickness (mm) | 3                |
| Fork Thickness (mm)      | 3                |
| To Suit Fixing Bolt (mm) | 10               |