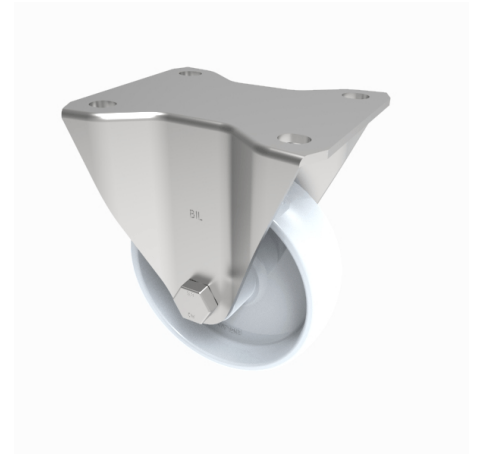


## Nylon Plate Fixed Castor 100mm 270kg Load

**Product code: BZEHF100NY**

Pressed steel fixed castor with a top plate fixing fitted with a white nylon wheel with a plain bore. Wheel diameter 100mm, tread width 32mm, overall height 128mm, plate size 105mm x 88mm, hole centres 80mm x 60mm. Load capacity 270kg.



Diameter (mm)	100
Castor Type	Fixed
Fixing Option	Plate
Height (mm)	128
Wheel Material	Nylon
Colour / Shore Hardness	White Nylon
Temperature Resistance	-30 °C TO +80 °C
Bearing Type	Plain
Load Capacity (kg)	270
Tread (mm)	32
Plate Size (mm)	105 x 86
Hole Centres (mm)	80 X 60
Top Plate Thickness (mm)	3
Fork Thickness (mm)	3
To Suit Fixing Bolt (mm)	8