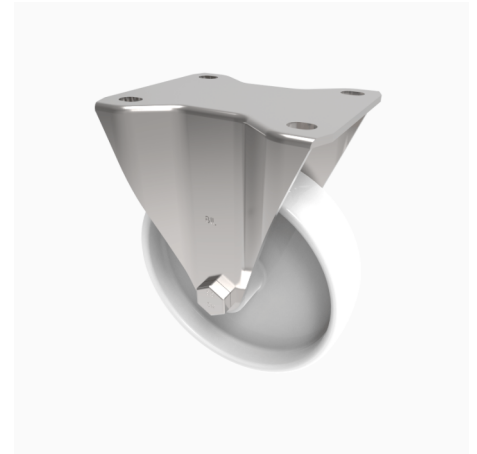


Nylon Plate Fixed Castor 125mm 300kg Load

Product code: BZHF125NY

Pressed steel fixed castor with a top plate fixing fitted with a white nylon wheel with a plain bore. Wheel diameter 125mm, tread width 35mm, overall height 155mm, top plate 105mm x 88mm, hole centres 80mm x 60mm. Load capacity 300kg.



Diameter (mm)	125
Castor Type	Fixed
Fixing Option	Plate
Height (mm)	155
Wheel Material	Nylon
Colour / Shore Hardness	White Nylon
Temperature Resistance	-30 °C TO +80 °C
Bearing Type	Plain
Load Capacity (kg)	300
Tread (mm)	35
Plate Size (mm)	105 x 86
Hole Centres (mm)	80 X 60
Top Plate Thickness (mm)	4
Fork Thickness (mm)	4
To Suit Fixing Bolt (mm)	8