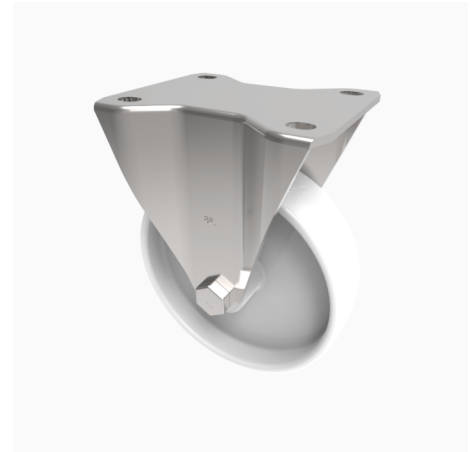


Nylon Plate Fixed Castor 125mm 300kg Load

Product code: BZEHF125NYLP

Pressed steel fixed castor with a top plate fixing fitted with a white nylon wheel with a plain bore. Wheel diameter 125mm, tread width 35mm, overall height 156mm, top plate 135mm x 110mm, hole centres 105mm x 80mm or 116mm x 63.5mm
 Load capacity 300kg



Diameter (mm)	125
Castor Type	Fixed
Fixing Option	Plate
Height (mm)	155
Wheel Material	Nylon
Colour / Shore Hardness	White Nylon
Temperature Resistance	-30 °C TO +80 °C
Bearing Type	Plain
Load Capacity (kg)	300
Tread (mm)	35
Plate Size (mm)	135 x 110
Hole Centres (mm)	105/116 x 80/64
Top Plate Thickness (mm)	3
Fork Thickness (mm)	3
To Suit Fixing Bolt (mm)	10