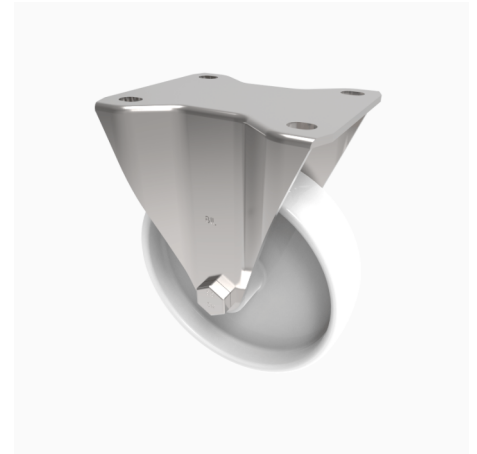


## Nylon Plate Fixed Castor 125mm 300kg Load

**Product code: BZEHF125NY**

Pressed steel fixed castor with a top plate fixing fitted with a white nylon wheel with a plain bore. Wheel diameter 125mm, tread width 35mm, overall height 155mm, top plate 105mm x 88mm, hole centres 80mm x 60mm. Load capacity 300kg.



|                          |                  |
|--------------------------|------------------|
| Diameter (mm)            | 125              |
| Castor Type              | Fixed            |
| Fixing Option            | Plate            |
| Height (mm)              | 155              |
| Wheel Material           | Nylon            |
| Colour / Shore Hardness  | White Nylon      |
| Temperature Resistance   | -30 °C TO +80 °C |
| Bearing Type             | Plain            |
| Load Capacity (kg)       | 300              |
| Tread (mm)               | 35               |
| Plate Size (mm)          | 105 x 86         |
| Hole Centres (mm)        | 80 X 60          |
| Top Plate Thickness (mm) | 3                |
| Fork Thickness (mm)      | 3                |
| To Suit Fixing Bolt (mm) | 8                |