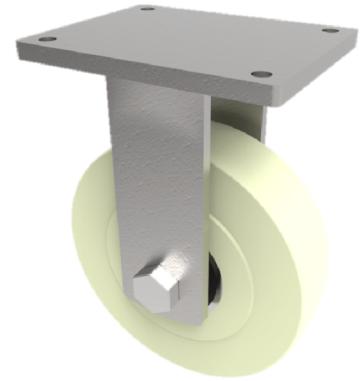


Nylon Plate Fixed Castor 150mm 1500kg Load

Product code: BZQF150NYBJ/50

Fabricated fixed castor with a flat plate fixing fitted with a white nylon wheel with ball bearings, Wheel diameter 150mm, tread width 50mm, overall height 212mm, plate size 175mm x 140mm, hole centres 140mm x 105mm. Load capacity 1500kg.



Diameter (mm)	150
Fixing Option	Plate
Castor Type	Fixed
Bearing Type	Ball
Height (mm)	212
Plate Size (mm)	175 X 140
Hole Centres (mm)	140 X 105
To Suit Fixing Bolt (mm)	14
Wheel Material	Cast Nylon
Colour / Shore Hardness	White Cast Nylon / 60 - 90 Shore D
Temperature Resistance	-30 °C TO +80 °C
Top Plate Thickness (mm)	12
Fork Thickness (mm)	10
Load Capacity (kg)	1500
Tread (mm)	50

BIL GROUP LTD

Porte Marsh Road, Calne, Wiltshire, SN11 9BW

Registered in England No: 2603821

VAT Reg: GB572705729

