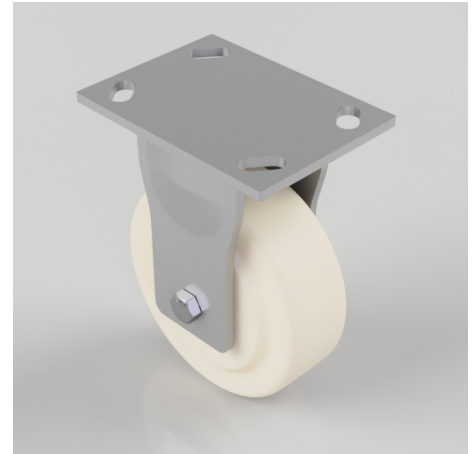


Nylon Plate Fixed Castor 150mm 1500kg Load

Product code: BZKF150NYBJHD

Fabricated fixed castor with a top plate fixing fitted with a white nylon wheel with ball bearings. Wheel diameter 150mm, tread width 50mm, overall height 200mm, top plate 150mm x 110mm, hole centres 105mm x 80mm or 121mm x 59mm. Load capacity 1500kg.



Diameter (mm)	150
Fixing Option	Plate
Castor Type	Fixed
Bearing Type	Ball
Height (mm)	200
Plate Size (mm)	150 x 110
Hole Centres (mm)	105/121 x 80/59
To Suit Fixing Bolt (mm)	12
Wheel Material	Cast Nylon
Colour / Shore Hardness	White Cast Nylon / 60 - 90 Shore D
Temperature Resistance	-30 °C TO +80 °C
Top Plate Thickness (mm)	7.5
Fork Thickness (mm)	6
Load Capacity (kg)	1500
Tread (mm)	50

BIL GROUP LTD

Porte Marsh Road, Calne, Wiltshire, SN11 9BW

Registered in England No: 2603821

VAT Reg: GB572705729

