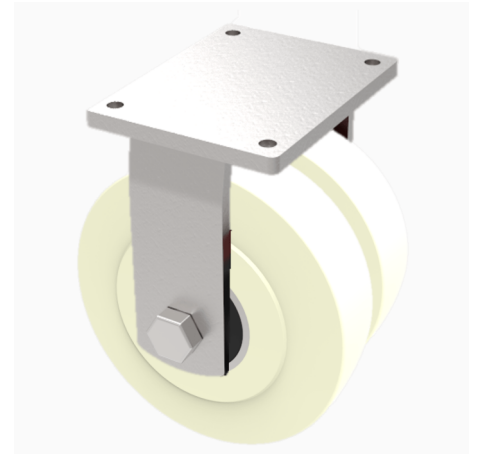


## Nylon Plate Fixed Castor 150mm 2000kg Load

**Product code: 2BZQF150NYBJ**

Fabricated fixed castor with a flat plate fixing fitted with 2 x white nylon wheels with ball bearings. Wheel diameter 150mm, tread width 45mm x 2, overall height 225mm, plate size 170mm x 140mm, hole centres 140mm x 105mm. Load capacity 2000kg.



Diameter (mm)	150
Fixing Option	Plate
Castor Type	Fixed
Bearing Type	Ball
Plate Size (mm)	175 X 140
Hole Centres (mm)	140 X 105
Height (mm)	212
To Suit Fixing Bolt (mm)	14
Wheel Material	Nylon
Colour / Shore Hardness	White Nylon
Temperature Resistance	&quot;-30 °C TO +80 °C
Tread (mm)	2 x 45
Load Capacity (kg)	2000
Top Plate Thickness (mm)	12
Fork Thickness (mm)	8