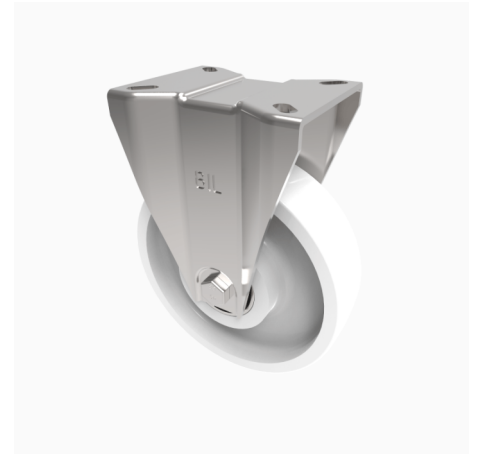


Nylon Plate Fixed Castor 150mm 300kg Load

Product code: BZPHFL150NYBJ

Pressed steel fixed castor with a top plate fixing fitted with white nylon wheel with ball bearings. Wheel diameter 150mm, tread width 40mm, overall height 190mm, top plate 105mm x 92mm, hole centres 80mm x 60mm. Load capacity 300Kg.



Diameter (mm)	150
Castor Type	Fixed
Fixing Option	Plate
Height (mm)	190
Wheel Material	Nylon
Colour / Shore Hardness	White Nylon
Temperature Resistance	-30 °C TO +80 °C
Bearing Type	Ball
Load Capacity (kg)	300
Tread (mm)	40
Plate Size (mm)	105 x 92
Hole Centres (mm)	80 X 60
Top Plate Thickness (mm)	4
Fork Thickness (mm)	3.5
To Suit Fixing Bolt (mm)	10