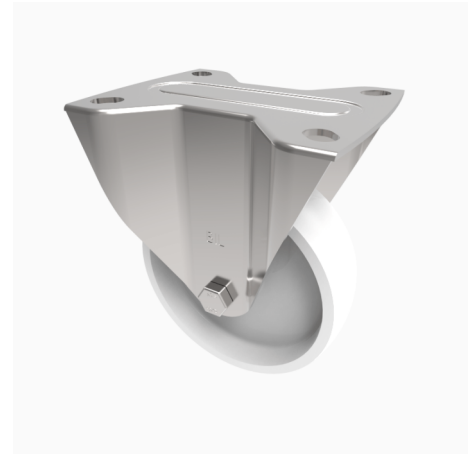


Nylon Plate Fixed Castor 150mm 500kg Load

Product code: SSPHF150NYB

Grade 304 Pressed stainless steel fixed castor with a top plate fixing fitted with a white nylon wheel with a roller bearing. Wheel diameter 150mm, tread width 45mm, overall height 190mm, top plate 135mm x 110mm, hole centres 105mm X 80/75mm. Load capacity 500kg



Diameter (mm)	150
Fixing Option	Plate
Castor Type	Fixed
Height (mm)	190
Wheel Material	Nylon
Colour / Shore Hardness	White Nylon
Bearing Type	Roller
Tread (mm)	45
Fork Thickness (mm)	4
To Suit Fixing Bolt (mm)	10
Load Capacity (kg)	500
Temperature Resistance	-30 °C TO +80 °C
Plate Size (mm)	135 x 110
Hole Centres (mm)	105 x 80/75
Top Plate Thickness (mm)	4