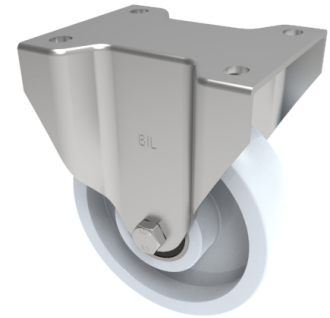


Nylon Plate Fixed Castor 150mm 500kg Load

Product code: BZPHF150NYBJ



Pressed steel fixed castor, fitted with a top plate, white nylon wheel, with ball bearings, 150mm wheel diameter, 45mm tread width, 188mm overall height, 135 x 115mm top plate, 105 x 80/75mm bolt holes, with a load capacity of 500kgs

Diameter (mm)	150
Castor Type	Fixed
Fixing Option	Plate
Height (mm)	190
Wheel Material	Nylon
Colour / Shore Hardness	White Nylon
Temperature Resistance	-30 °C TO +80 °C
Bearing Type	Ball
Load Capacity (kg)	500
Tread (mm)	45
Plate Size (mm)	135 x 115
Hole Centres (mm)	105 x 80/75
Top Plate Thickness (mm)	5
Fork Thickness (mm)	5
To Suit Fixing Bolt (mm)	10