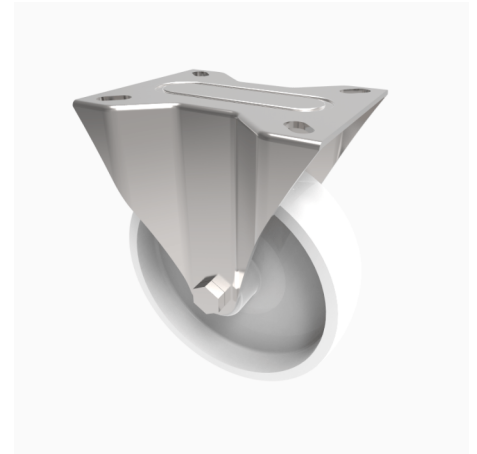


Nylon Plate Fixed Castor 160mm 350kg Load

Product code: SSMMF160NY

Grade 304 Pressed stainless steel fixed castor with a top plate fixing fitted with a white nylon wheel with a plain bore. Wheel diameter 160mm, tread width 40mm, overall height 187mm, plate size 140mm x 110mm, hole centres 105mm x 80/75mm. Load capacity 350kg.



Diameter (mm)	160
Fixing Option	Plate
Castor Type	Fixed
Height (mm)	195
Wheel Material	Nylon
Colour / Shore Hardness	White Nylon
Bearing Type	Plain
Tread (mm)	45
Fork Thickness (mm)	2
To Suit Fixing Bolt (mm)	8
Load Capacity (kg)	350
Temperature Resistance	-30 °C TO +80 °C
Plate Size (mm)	135 x 110
Hole Centres (mm)	105 x 80
Top Plate Thickness (mm)	3