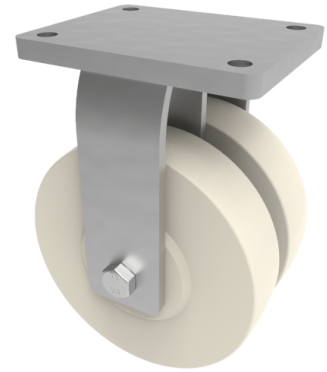


Nylon Plate Fixed Castor 200mm 3000kg Load

Product code: 2BZQF200NYBJHD



Fabricated twin wheel fixed castor with a top plate fixing fitted with 2 heavy duty white nylon wheels with ball bearings. Wheels diameter 200mm, tread width 2 x 50mm, overall height 264mm, top plate 175mm x 140mm, hole centres 140mm x 105. Load capacity 3000kg.

Diameter (mm)	200
Fixing Option	Plate
Castor Type	Fixed
Bearing Type	Ball
Plate Size (mm)	175 X 140
Hole Centres (mm)	140 X 105
Height (mm)	264
To Suit Fixing Bolt (mm)	14
Wheel Material	Nylon
Colour / Shore Hardness	White Nylon
Temperature Resistance	"-30 °C TO +80 °C
Tread (mm)	2 x 50
Load Capacity (kg)	3000
Top Plate Thickness (mm)	12
Fork Thickness (mm)	8