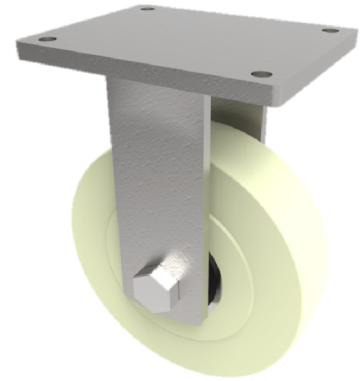


Nylon Plate Fixed Castor 200mm 4500kg Load

Product code: BZQFXX200NYBJ



Fabricated fixed castor with a top plate fixing fitted with a heavy duty nylon wheel with ball bearings wheel. Wheel diameter 200mm, tread width 80mm, overall height 280mm, top plate 255mm x 200mm, hole centres 210mm x 160. Load capacity 4500kg.

Diameter (mm)	200
Fixing Option	Plate
Castor Type	Fixed
Bearing Type	Ball
Height (mm)	280
Plate Size (mm)	255 X 200
Hole Centres (mm)	210 X 160
To Suit Fixing Bolt (mm)	16
Wheel Material	Cast Nylon
Colour / Shore Hardness	White Cast Nylon / 60 - 90 Shore D
Temperature Resistance	-30 °C TO +80 °C
Top Plate Thickness (mm)	16
Fork Thickness (mm)	12
Load Capacity (kg)	4500
Tread (mm)	80

BIL GROUP LTD

Porte Marsh Road, Calne, Wiltshire, SN11 9BW

Registered in England No: 2603821

VAT Reg: GB572705729

