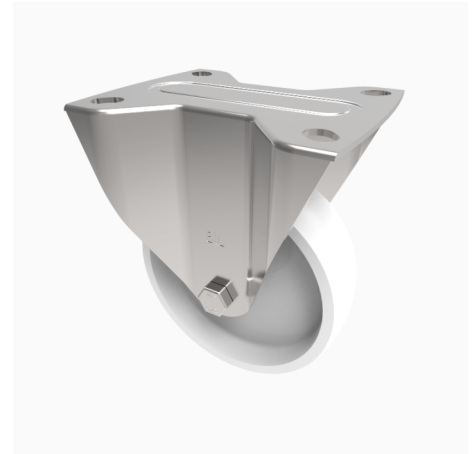


Nylon Plate Fixed Castor 200mm 500kg Load

Product code: SSPHF200NY

Grade 304 Pressed stainless steel fixed castor with a top plate fixing fitted with a white nylon wheel with a Plain Bore. Wheel diameter 200mm, tread width 50mm, overall height 238mm, top plate 135mm x 110mm, hole centres 105mm X 80mm. Load capacity 500kg



Diameter (mm)	200
Fixing Option	Plate
Castor Type	Fixed
Height (mm)	238
Wheel Material	Nylon
Colour / Shore Hardness	White Nylon
Bearing Type	Plain
Tread (mm)	50
Fork Thickness (mm)	4
To Suit Fixing Bolt (mm)	10
Load Capacity (kg)	500
Temperature Resistance	-30 °C TO +80 °C
Plate Size (mm)	135 x 110
Hole Centres (mm)	105 x 80/75
Top Plate Thickness (mm)	4