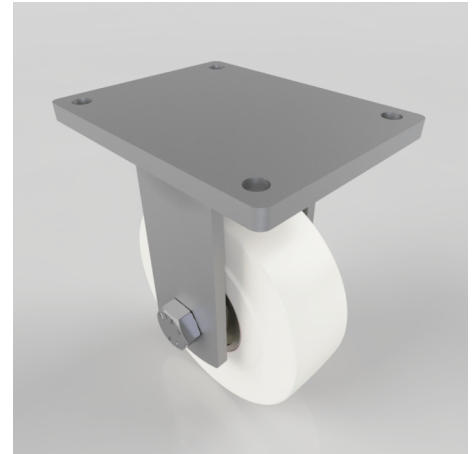


## Nylon Plate Fixed Castor 250mm 6000kg Load

**Product code: BZQFXX250NYBJ**

Fabricated fixed castor with a top plate fixing fitted with a white cast polyamide wheel with ball bearings. Wheel diameter 250mm, tread width 80mm, overall height 330mm, top plate 255mm x 200mm, hole centres 210mm x 160mm. Load capacity 6000kg.



Diameter (mm)	250
Fixing Option	Plate
Castor Type	Fixed
Bearing Type	Ball
Height (mm)	330
Plate Size (mm)	255 X 200
Hole Centres (mm)	210 X 160
To Suit Fixing Bolt (mm)	16
Wheel Material	Cast Nylon
Colour / Shore Hardness	White Cast Nylon / 60 - 90 Shore D
Temperature Resistance	-30 °C TO +80 °C
Top Plate Thickness (mm)	16
Fork Thickness (mm)	12
Load Capacity (kg)	6000
Tread (mm)	80