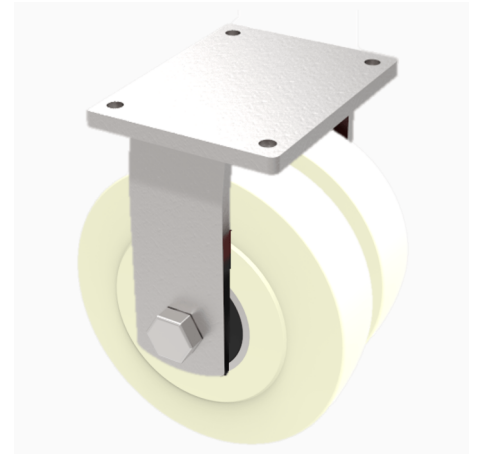


## Nylon Plate Fixed Castor 250mm 5000kg Load

**Product code: 2BZQFXL250NYBJ**

Fabricated twin wheeled fixed castor fitted with heavy duty white nylon wheels with ball bearings. Wheel diameter 250mm, Tread width 55mm + 55mm, Overall height 314mm, Top plate 200mm x 160mm, Hole centres 160mm x 120mm, Load capacity 5000kg



Diameter (mm)	250
Fixing Option	Plate
Castor Type	Fixed
Bearing Type	Ball
Plate Size (mm)	200 X 160
Hole Centres (mm)	160 X 120
Height (mm)	314
To Suit Fixing Bolt (mm)	16
Wheel Material	Nylon
Colour / Shore Hardness	White Nylon
Temperature Resistance	&quot;-30 °C TO +80 °C
Tread (mm)	2 x 55
Load Capacity (kg)	5000
Top Plate Thickness (mm)	16
Fork Thickness (mm)	10