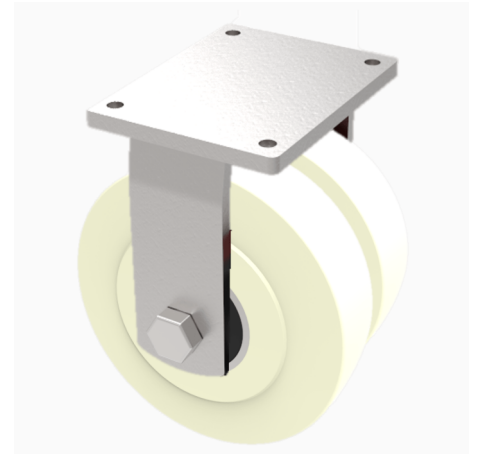


## Nylon Plate Fixed Castor 250mm 5000kg Load

**Product code: 2BZQXFL250NYBJ**

Fabricated twin wheel fixed castor with a top plate fixing fitted with heavy duty white nylon wheels with ball bearings, Wheel diameter 250mm, Tread width 55mm + 55mm, Overall height 314mm, top plate 200mm x 160mm, hole centres 160mm x 120mm. Load capacity 5000kg.



|                          |                        |
|--------------------------|------------------------|
| Diameter (mm)            | 250                    |
| Fixing Option            | Plate                  |
| Castor Type              | Fixed                  |
| Bearing Type             | Ball                   |
| Plate Size (mm)          | 200 X 160              |
| Hole Centres (mm)        | 160 X 120              |
| Height (mm)              | 314                    |
| To Suit Fixing Bolt (mm) | 16                     |
| Wheel Material           | Nylon                  |
| Colour / Shore Hardness  | White Nylon            |
| Temperature Resistance   | &quot;-30 °C TO +80 °C |
| Tread (mm)               | 2 x 55                 |
| Load Capacity (kg)       | 5000                   |
| Top Plate Thickness (mm) | 16                     |
| Fork Thickness (mm)      | 10                     |

## BIL GROUP LTD

Porte Marsh Road, Calne, Wiltshire, SN11 9BW

Registered in England No: 2603821

VAT Reg: GB572705729

