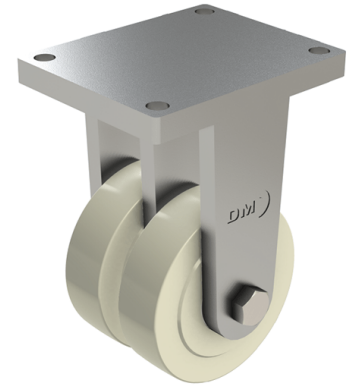


## Nylon Plate Fixed Castor 300mm 15000kg Load

**Product code: TF300NYBJHD**



**POA** Heavy duty fabricated twin wheel fixed castor fitted with 2 x cast machined nylon wheels with ball bearings, Wheel diameter 300mm, Tread width 110mm x 2, Overall height 589mm, Top plate 400mm x 500mm, Hole centres 300mm x 400mm, Load capacity 15000kg **\*\*MANUFACTURED TO ORDER\*\***

Diameter (mm)	300
Fixing Option	Plate
Castor Type	Fixed
Bearing Type	Ball
Plate Size (mm)	400 x 500
Hole Centres (mm)	400 x 500
Height (mm)	589
To Suit Fixing Bolt (mm)	20
Wheel Material	Nylon
Colour / Shore Hardness	White Nylon
Temperature Resistance	&quot;-30 °C TO +80 °C
Tread (mm)	2 x 110
Load Capacity (kg)	15000

### BIL GROUP LTD

Porte Marsh Road, Calne, Wiltshire, SN11 9BW

Registered in England No: 2603821

VAT Reg: GB572705729

