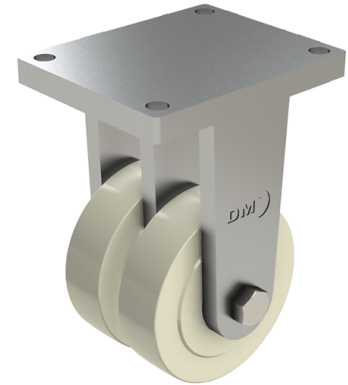


Nylon Plate Fixed Castor 80mm 1800kg Load

Product code: TF80NYBJ



POA Heavy duty fabricated twin wheel fixed castor fitted with 2 x cast machined nylon wheels with ball bearings, Wheel diameter 80mm, Tread width 40mm x 2, Overall height 135mm, Top plate 135mm x 110mm, Hole centres 105mm x 75mm, Load capacity 1800kg ****MANUFACTURED TO ORDER****

Diameter (mm)	80
Fixing Option	Plate
Castor Type	Fixed
Bearing Type	Ball
Plate Size (mm)	135 x 110
Hole Centres (mm)	135 x 110
Height (mm)	135
To Suit Fixing Bolt (mm)	14
Wheel Material	Nylon
Colour / Shore Hardness	White Nylon
Temperature Resistance	"-30 °C TO +80 °C
Tread (mm)	2 x 40
Load Capacity (kg)	1800

BIL GROUP LTD

Porte Marsh Road, Calne, Wiltshire, SN11 9BW

Registered in England No: 2603821

VAT Reg: GB572705729

