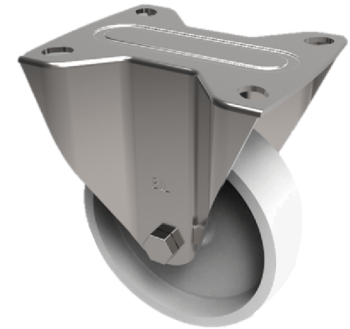


Nylon Plate Fixed Castor 80mm 250kg Load

Product code: SSEHF80NY



Grade 304 Pressed stainless steel fixed with a top plate fixing fitted with a white nylon wheel with a plain bore. Wheel diameter 80mm, tread width 35mm, overall height 111mm, plate size 105mm x 86mm, hole centres 80mm x 60mm. Load capacity 250kg.

Diameter (mm)	80
Fixing Option	Plate
Castor Type	Fixed
Height (mm)	110
Wheel Material	Nylon
Colour / Shore Hardness	White Nylon
Bearing Type	Plain
Tread (mm)	35
Fork Thickness (mm)	3
To Suit Fixing Bolt (mm)	8
Load Capacity (kg)	250
Temperature Resistance	-30 °C TO +80 °C
Plate Size (mm)	105 x 86
Hole Centres (mm)	80 X 60
Top Plate Thickness (mm)	3