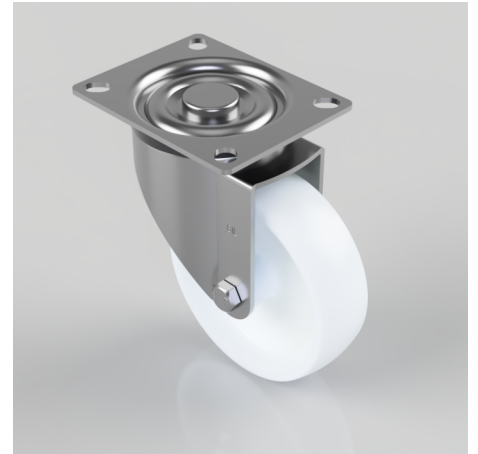


## Nylon Plate Swivel Castor 100mm 180kg Load

**Product code: BZGMM100NY**

Pressed steel swivel castor with a top plate fixing fitted with a white nylon wheel with Plain Bore. Wheel diameter 100mm, tread width 30mm, overall height 128mm, top plate 98mm x 78mm, hole centres 82/78mm x 62/58mm, Load capacity 180kg.



Diameter (mm)	100
Castor Type	Swivel
Fixing Option	Plate
Height (mm)	128
Wheel Material	Nylon
Colour / Shore Hardness	White Nylon
Temperature Resistance	-30 °C TO +80 °C
Bearing Type	Plain
Load Capacity (kg)	180
Tread (mm)	30
Swivel Radius (mm)	84
Plate Size (mm)	98 X 78
Hole Centres (mm)	82/78 X 62/58
Top Plate Thickness (mm)	2.5
Fork Thickness (mm)	2.5
To Suit Fixing Bolt (mm)	8

### BIL GROUP LTD

Porte Marsh Road, Calne, Wiltshire, SN11 9BW

Registered in England No: 2603821

VAT Reg: GB572705729

