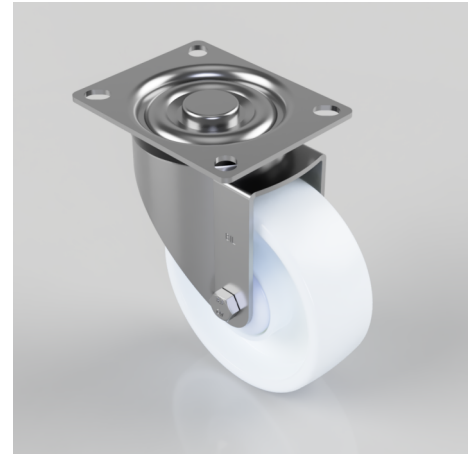


## Nylon Plate Swivel Castor 100mm 180kg Load

**Product code: BZGMM100NYBJ**

Pressed steel swivel castor with a top plate fixing fitted with a white nylon wheel with single ball bearing and retainer caps. Wheel diameter 100mm, tread width 36mm, overall height 128mm, plate size 98mm x 78mm, hole centres 82/78mm x 62/58mm. Load capacity 200kg.



Diameter (mm)	100
Castor Type	Swivel
Fixing Option	Plate
Height (mm)	128
Wheel Material	Nylon
Colour / Shore Hardness	White Nylon
Temperature Resistance	-30 °C TO +80 °C
Bearing Type	Ball
Load Capacity (kg)	180
Tread (mm)	36
Swivel Radius (mm)	84
Plate Size (mm)	98 X 78
Hole Centres (mm)	82/78 X 62/58
Top Plate Thickness (mm)	2.5
Fork Thickness (mm)	2.5
To Suit Fixing Bolt (mm)	8

## BIL GROUP LTD

Porte Marsh Road, Calne, Wiltshire, SN11 9BW

Registered in England No: 2603821

VAT Reg: GB572705729

