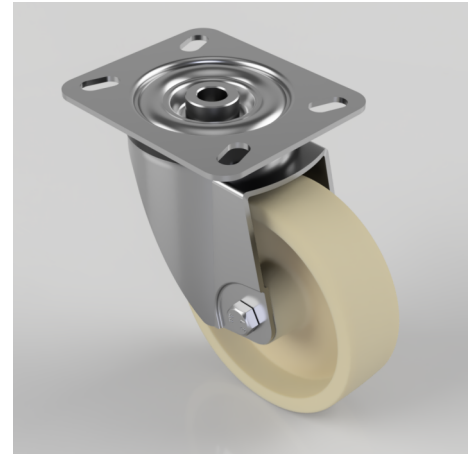


Nylon Plate Swivel Castor 100mm 180kg Load

Product code: BZMM100NYHT

Pressed steel swivel castor with a top plate fixing fitted with a off white nylon wheel with a Plain Bore . Wheel diameter 100mm, tread width 30mm, overall height 128mm, top plate 105mm x 85mm, hole centres 80/75mm x 60/45mm, Load capacity 180kg at a maximum 130c.



Diameter (mm)	100
Fixing Option	Plate
Castor Type	Swivel
Plate Size (mm)	105 X 85
Hole Centres (mm)	80/75 x 60/45
To Suit Fixing Bolt (mm)	8
Height (mm)	128
Bearing Type	Plain
Swivel Radius (mm)	92
Wheel Material	Nylon
Colour / Shore Hardness	White High Temperature Nylon
Temperature Resistance	-30 °C to +130 °C
Load Capacity (kg)	180
Tread (mm)	30
Top Plate Thickness (mm)	2.5
Fork Thickness (mm)	2.5

BIL GROUP LTD

Porte Marsh Road, Calne, Wiltshire, SN11 9BW

Registered in England No: 2603821

VAT Reg: GB572705729

