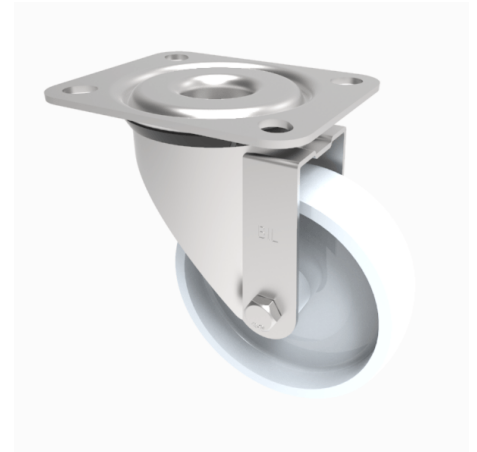


Nylon Plate Swivel Castor 100mm 180kg Load

Product code: SSMM100NY

Grade 304 Pressed stainless steel swivel castor with a top plate fixing fitted with a white nylon wheel with a plain bore. Wheel diameter 100mm, tread width 30mm, overall height 128mm, top plate 105mm x 85mm, hole centres 80mm x 60mm. Load capacity 180kg



| | |
|--------------------------|------------------|
| Diameter (mm) | 100 |
| Fixing Option | Plate |
| Castor Type | Swivel |
| Height (mm) | 128 |
| Wheel Material | Nylon |
| Colour / Shore Hardness | White Nylon |
| Bearing Type | Plain |
| Tread (mm) | 30 |
| Fork Thickness (mm) | 2 |
| To Suit Fixing Bolt (mm) | 8 |
| Load Capacity (kg) | 180 |
| Temperature Resistance | -30 °C TO +80 °C |
| Plate Size (mm) | 105 X 85 |
| Hole Centres (mm) | 80 X 60 |
| Top Plate Thickness (mm) | 2 |
| Swivel Radius (mm) | 84 |

BIL GROUP LTD

Porte Marsh Road, Calne, Wiltshire, SN11 9BW

Registered in England No: 2603821

VAT Reg: GB572705729

