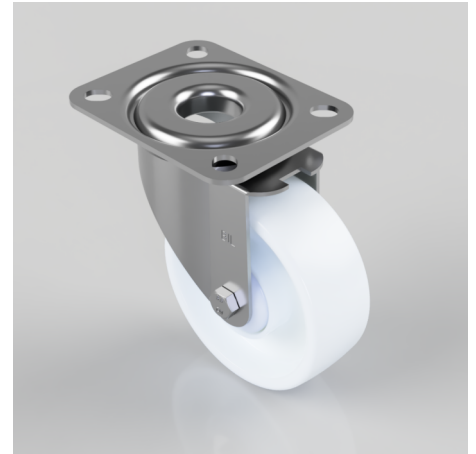


Nylon Plate Swivel Castor 100mm 180kg Load

Product code: BZMM100NYBJ

Pressed steel swivel castor with a top plate fixing fitted with a white nylon wheel with single ball bearing and hub caps. Wheel diameter 100mm, tread width 36mm, overall height 128mm, plate size 105mm x 85mm, hole centres 80mm x 60mm. Load capacity 180kg.



Diameter (mm)	100
Castor Type	Swivel
Fixing Option	Plate
Height (mm)	128
Wheel Material	Nylon
Colour / Shore Hardness	White Nylon
Temperature Resistance	-30 °C TO +80 °C
Bearing Type	Ball
Load Capacity (kg)	180
Tread (mm)	36
Swivel Radius (mm)	84
Plate Size (mm)	105 X 85
Hole Centres (mm)	80 X 60
Top Plate Thickness (mm)	2.5
Fork Thickness (mm)	2
To Suit Fixing Bolt (mm)	8

BIL GROUP LTD

Porte Marsh Road, Calne, Wiltshire, SN11 9BW

Registered in England No: 2603821

VAT Reg: GB572705729

