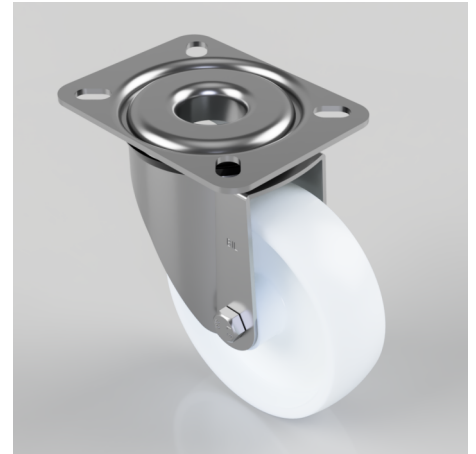


Nylon Plate Swivel Castor 100mm 150kg Load

Product code: BZRMM100NYB

Pressed steel swivel castor with a top plate fixing fitted with a white nylon wheel with a roller bearing. Wheel diameter 100mm, tread width 30mm, overall height 128mm, top plate 104mm x 80mm and hole centres 80mm x 60mm and 72mm x 52mm Load capacity 150kg



| | |
|--------------------------|------------------|
| Diameter (mm) | 100 |
| Castor Type | Swivel |
| Fixing Option | Plate |
| Height (mm) | 128 |
| Wheel Material | Nylon |
| Colour / Shore Hardness | White Nylon |
| Temperature Resistance | -30 °C TO +80 °C |
| Bearing Type | Roller |
| Load Capacity (kg) | 150 |
| Tread (mm) | 30 |
| Swivel Radius (mm) | 84 |
| Plate Size (mm) | 104 x 80 |
| Hole Centres (mm) | 80/72 x 60/52 |
| Top Plate Thickness (mm) | 2.5 |
| Fork Thickness (mm) | 2 |
| To Suit Fixing Bolt (mm) | 8 |

BIL GROUP LTD

Porte Marsh Road, Calne, Wiltshire, SN11 9BW

Registered in England No: 2603821

VAT Reg: GB572705729

