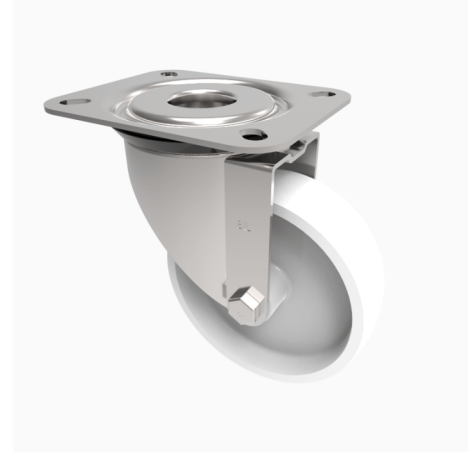


Nylon Plate Swivel Castor 100mm 180kg Load

Product code: BZRMM100NYBJ

Pressed steel swivel castor with a top plate fixing fitted with a white nylon wheel with a ball bearing. Wheel diameter 100mm, tread width 30mm, overall height 128mm, top plate 104mm x 80mm and 72mm x 52mm hole centres 80mm x 60mm and 72mm x 52mm Load capacity 180kg



Diameter (mm)	100
Castor Type	Swivel
Fixing Option	Plate
Height (mm)	128
Wheel Material	Nylon
Colour / Shore Hardness	White Nylon
Temperature Resistance	-30 °C TO +80 °C
Bearing Type	Ball
Load Capacity (kg)	180
Tread (mm)	36
Swivel Radius (mm)	84
Plate Size (mm)	104 x 80
Hole Centres (mm)	80/72 x 60/52
Top Plate Thickness (mm)	2.5
Fork Thickness (mm)	2.5
To Suit Fixing Bolt (mm)	8

BIL GROUP LTD

Porte Marsh Road, Calne, Wiltshire, SN11 9BW

Registered in England No: 2603821

VAT Reg: GB572705729

