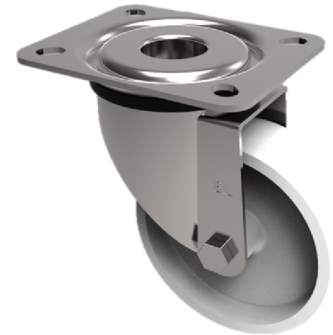


## Nylon Plate Swivel Castor 100mm 180kg Load

**Product code: SSMM100NYHT**



Grade 304 Pressed stainless steel swivel castor with top plate fixing fitted with a 130c off white nylon wheel. Wheel diameter 100mm, tread width 35mm, overall height 128 mm, plate size 105mm x 85mm, hole centres 80mm x 60mm. Load capacity 180kg at 130c.

Diameter (mm)	100
Fixing Option	Plate
Castor Type	Swivel
Plate Size (mm)	105 X 85
Hole Centres (mm)	80 X 60
To Suit Fixing Bolt (mm)	8
Height (mm)	128
Bearing Type	Plain
Swivel Radius (mm)	84
Wheel Material	Nylon
Colour / Shore Hardness	White High Temperature Nylon
Temperature Resistance	-30 °C to +130 °C
Load Capacity (kg)	180
Tread (mm)	35
Top Plate Thickness (mm)	2
Fork Thickness (mm)	2

### BIL GROUP LTD

Porte Marsh Road, Calne, Wiltshire, SN11 9BW

Registered in England No: 2603821

VAT Reg: GB572705729

