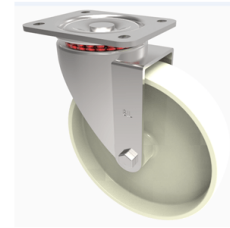


Nylon Plate Swivel Castor 100mm 220kg Load

Product code: BZH100NYHT



Pressed steel swivel castor with a top plate fixing fitted with a off white nylon wheel with a Plain Bore . Wheel diameter 100mm, tread width 35mm, overall height 128mm, top plate 105mm x 86mm, hole centres 80mm x 60mm Load capacity 220kg at a maximum 130c.

Diameter (mm)	100
Fixing Option	Plate
Castor Type	Swivel
Plate Size (mm)	105 x 86
Hole Centres (mm)	80 X 60
To Suit Fixing Bolt (mm)	8
Height (mm)	128
Bearing Type	Plain
Swivel Radius (mm)	90
Wheel Material	Nylon
Colour / Shore Hardness	White High Temperature Nylon
Temperature Resistance	-30 °C to +130 °C
Load Capacity (kg)	220
Tread (mm)	35
Top Plate Thickness (mm)	4
Fork Thickness (mm)	4