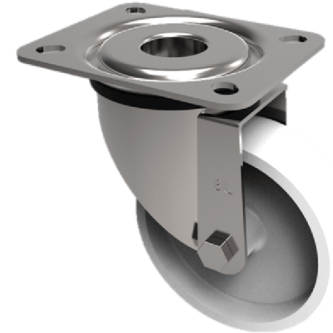


## Nylon Plate Swivel Castor 100mm 220kg Load

**Product code: SSMH100NYHT**



Grade 304 Stainless steel swivel castor with a top plate fixing fitted with a off white nylon wheel with a plain bore . Wheel diameter 100mm, tread width 40mm, overall height 133mm, top plate 100mm x 85mm, hole centres 80mm x 60mm or 75mm x 45mm. Load capacity 220kg at a maximum 150c.

Diameter (mm)	100
Fixing Option	Plate
Castor Type	Swivel
Plate Size (mm)	100 x 85
Hole Centres (mm)	80/75 x 60/45
To Suit Fixing Bolt (mm)	8
Height (mm)	128
Bearing Type	Plain
Swivel Radius (mm)	92
Wheel Material	Nylon
Colour / Shore Hardness	White High Temperature Nylon
Temperature Resistance	-30 °C to +130 °C
Load Capacity (kg)	220
Tread (mm)	35
Top Plate Thickness (mm)	2.5
Fork Thickness (mm)	2.5