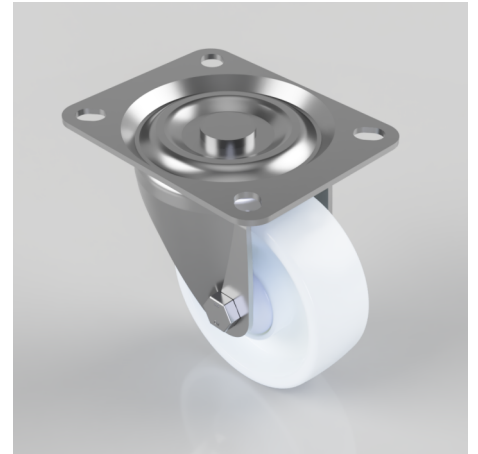


Nylon Plate Swivel Castor 100mm 250kg Load

Product code: BZH100NYBJLP

Pressed steel swivel castor with a top plate fixing fitted with a white nylon wheel with single ball bearing and retainer caps. Wheel diameter 100mm, tread width 36mm, overall height 127mm, top plate 130mm x 103mm, hole centres 105mm x 80mm or 100mm x 76mm Load capacity 250kg.



Diameter (mm)	100
Castor Type	Swivel
Fixing Option	Plate
Height (mm)	127
Wheel Material	Nylon
Colour / Shore Hardness	White Nylon
Temperature Resistance	-30 °C TO +80 °C
Bearing Type	Ball
Load Capacity (kg)	250
Tread (mm)	36
Swivel Radius (mm)	77
Plate Size (mm)	128 x 102
Hole Centres (mm)	105/100 x 80/76
Top Plate Thickness (mm)	3
Fork Thickness (mm)	3
To Suit Fixing Bolt (mm)	10

BIL GROUP LTD

Porte Marsh Road, Calne, Wiltshire, SN11 9BW

Registered in England No: 2603821

VAT Reg: GB572705729

