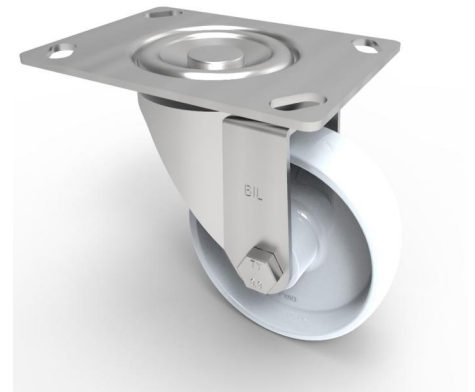


## Nylon Plate Swivel Castor 100mm 270kg Load

**Product code: BZEH100NYLP**

Pressed steel swivel castor with a top plate fixing fitted with a white nylon wheel with a plain bore. Wheel diameter 100mm, tread width 32mm, overall height 129mm, plate size 135mm x 110mm, hole centres 105mm x 80mm or 116mm x 93.5mm. Load capacity 270kg.



Diameter (mm)	100
Castor Type	Swivel
Fixing Option	Plate
Height (mm)	128
Wheel Material	Nylon
Colour / Shore Hardness	White Nylon
Temperature Resistance	-30 °C TO +80 °C
Bearing Type	Plain
Load Capacity (kg)	270
Tread (mm)	32
Swivel Radius (mm)	90
Plate Size (mm)	135 x 110
Hole Centres (mm)	105/116 x 80/64
Top Plate Thickness (mm)	3
Fork Thickness (mm)	3
To Suit Fixing Bolt (mm)	10

### BIL GROUP LTD

Porte Marsh Road, Calne, Wiltshire, SN11 9BW

Registered in England No: 2603821

VAT Reg: GB572705729

