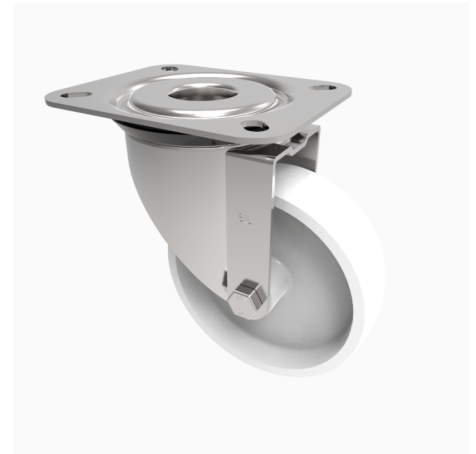


Nylon Plate Swivel Castor 100mm 270kg Load

Product code: SSPH100NYB

Grade 304 Pressed stainless steel swivel castor with a top plate fixing fitted with a white nylon wheel with a Plain Bore. Wheel diameter 100mm, tread width 32mm, overall height 130mm, top plate 135mm x 110mm, hole centres 105mm X 80mm. Load capacity 270kg



Diameter (mm)	100
Fixing Option	Plate
Castor Type	Swivel
Height (mm)	132
Wheel Material	Nylon
Colour / Shore Hardness	White Nylon
Bearing Type	Roller
Tread (mm)	32
Fork Thickness (mm)	4
To Suit Fixing Bolt (mm)	10
Load Capacity (kg)	270
Temperature Resistance	-30 °C TO +80 °C
Plate Size (mm)	135 x 110
Hole Centres (mm)	105 x 80/75
Top Plate Thickness (mm)	4
Swivel Radius (mm)	90

BIL GROUP LTD

Porte Marsh Road, Calne, Wiltshire, SN11 9BW

Registered in England No: 2603821

VAT Reg: GB572705729

