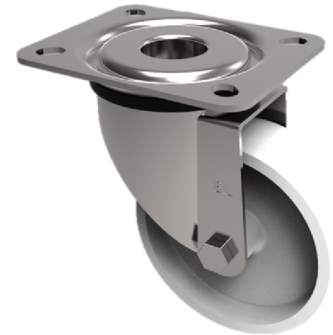


Nylon Plate Swivel Castor 100mm 270kg Load

Product code: BZPH100NY



Pressed steel swivel castor with a top plate fixing fitted with a white nylon wheel with a plain bore. Wheel diameter 100mm, tread width 32mm, overall height 129mm, plate size 135mm x 110mm, hole centres 105mm x 80/75mm. Load capacity 270kg.

Diameter (mm)	100
Castor Type	Swivel
Fixing Option	Plate
Height (mm)	132
Wheel Material	Nylon
Colour / Shore Hardness	White Nylon
Temperature Resistance	-30 °C TO +80 °C
Bearing Type	Plain
Load Capacity (kg)	270
Tread (mm)	32
Swivel Radius (mm)	90
Plate Size (mm)	135 x 110
Hole Centres (mm)	105 x 80/75
Top Plate Thickness (mm)	4
Fork Thickness (mm)	4
To Suit Fixing Bolt (mm)	10

BIL GROUP LTD

Porte Marsh Road, Calne, Wiltshire, SN11 9BW

Registered in England No: 2603821

VAT Reg: GB572705729

