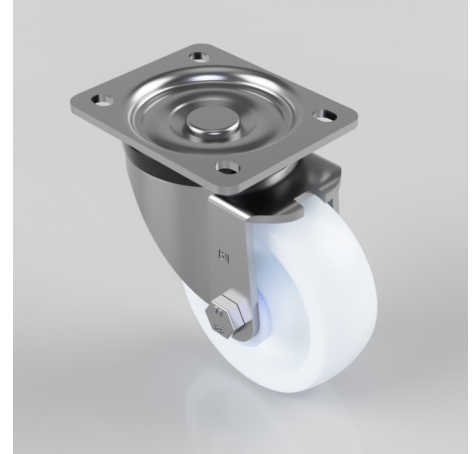


Nylon Plate Swivel Castor 100mm 400kg Load

Product code: BZH100NY/HD

Pressed steel swivel castor with a top plate fixing fitted with a white nylon wheel with a plain bore. Wheel diameter 100mm, tread width 35mm, overall height 128mm, plate size 105mm x 86mm, hole centres 80mm x 60mm. Load capacity 400kg.



Diameter (mm)	100
Castor Type	Swivel
Fixing Option	Plate
Height (mm)	128
Wheel Material	Nylon
Colour / Shore Hardness	White Nylon
Temperature Resistance	-30 °C TO +80 °C
Bearing Type	Plain
Load Capacity (kg)	400
Tread (mm)	35
Swivel Radius (mm)	90
Plate Size (mm)	105 x 86
Hole Centres (mm)	80 X 60
Top Plate Thickness (mm)	4
Fork Thickness (mm)	4
To Suit Fixing Bolt (mm)	8