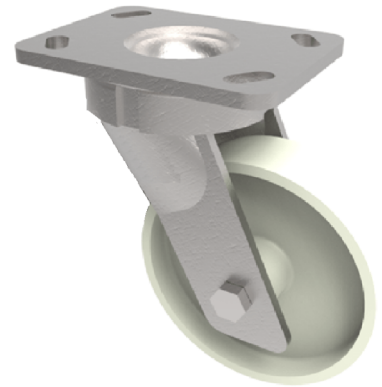


Nylon Plate Swivel Castor 100mm 650kg Load

Product code: BZK100NYBJ



Fabricated swivel castor with a top plate fixing fitted with a white nylon wheel with ball bearings. Wheel diameter 100mm, tread width 40mm, overall height 150mm, top plate 150mm x 110mm, hole centres 105mm x 80mm or 121mm x 59mm. Load capacity 650kg

Diameter (mm)	100
Fixing Option	Plate
Castor Type	Swivel
Bearing Type	Ball
Height (mm)	150
Plate Size (mm)	150 x 110
Hole Centres (mm)	105/121 x 80/59
To Suit Fixing Bolt (mm)	12
Wheel Material	Nylon
Colour / Shore Hardness	White Nylon
Temperature Resistance	-30 °C TO +80 °C
Top Plate Thickness (mm)	7.5
Fork Thickness (mm)	6
Swivel Radius (mm)	93
Load Capacity (kg)	650
Tread (mm)	40