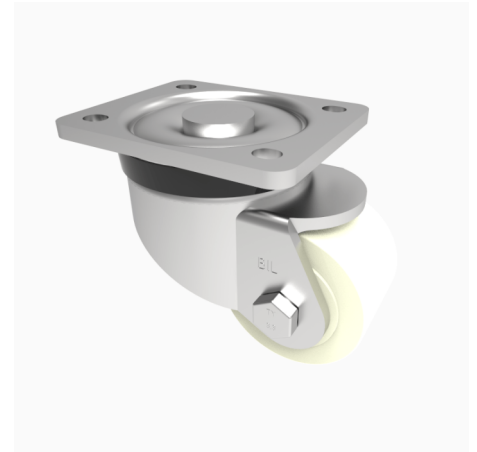


Nylon Plate Swivel Castor 100mm 800kg Load

Product code: BZXP100NYBJHD

Pressed steel swivel castor with a top plate fixing fitted with a white nylon wheel with ball bearings. Wheel diameter 100mm, tread width 45mm, overall height 140mm, top plate 105mm x 86mm, hole centres 80mm x 60mm. Load capacity 800kg.



Diameter (mm)	100
Castor Type	Swivel
Fixing Option	Plate
Height (mm)	140
Wheel Material	Nylon
Colour / Shore Hardness	White Nylon
Temperature Resistance	-30 °C TO +80 °C
Bearing Type	Ball
Load Capacity (kg)	800
Tread (mm)	45
Swivel Radius (mm)	95
Plate Size (mm)	105 x 86
Hole Centres (mm)	80 / 77 X 60
Top Plate Thickness (mm)	6
Fork Thickness (mm)	5
To Suit Fixing Bolt (mm)	8