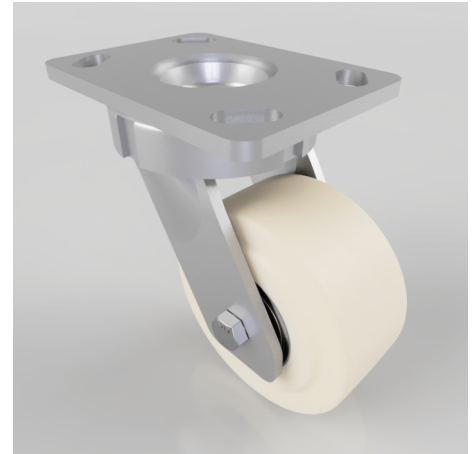


## Nylon Plate Swivel Castor 125mm 1500kg Load

**Product code: BZK125NYBJHD**

Fabricated swivel castor with a top plate fixing with a heavy duty white nylon wheel with ball bearing. Wheel diameter 125mm, tread width 55mm, overall height 177mm, plate size 150mm x 110mm, hole centres 105mm x 80mm or 121mm x 59mm. Load capacity 1500kg. (Catalogue SKU BZK125NYBJ/HD)



Diameter (mm)	125
Fixing Option	Plate
Castor Type	Swivel
Bearing Type	Ball
Height (mm)	177
Plate Size (mm)	150 x 110
Hole Centres (mm)	105/121 x 80/59
To Suit Fixing Bolt (mm)	12
Wheel Material	Cast Nylon
Colour / Shore Hardness	White Cast Nylon / 60 - 90 Shore D
Temperature Resistance	-30 °C TO +80 °C
Top Plate Thickness (mm)	7.5
Fork Thickness (mm)	6
Swivel Radius (mm)	115
Load Capacity (kg)	1500
Tread (mm)	55

## BIL GROUP LTD

Porte Marsh Road, Calne, Wiltshire, SN11 9BW

Registered in England No: 2603821

VAT Reg: GB572705729

