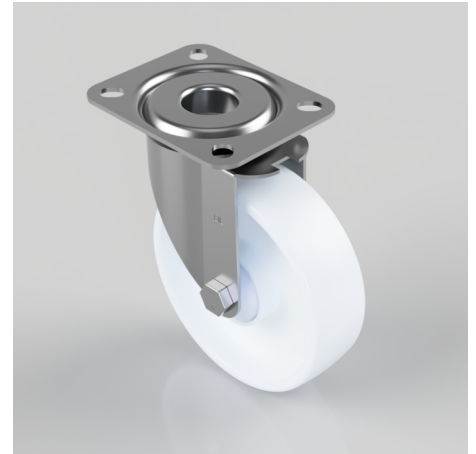


## Nylon Plate Swivel Castor 125mm 200kg Load

**Product code: BZMM125NYBJ**

Pressed steel swivel castor with a top plate fixing fitted with a white nylon wheel with single ball bearing and hub caps. Wheel diameter 125mm, tread width 37mm, overall height 155mm, plate size 105mm x 85mm, hole centres 80mm x 60mm. Load capacity 200kg.



|                          |                  |
|--------------------------|------------------|
| Diameter (mm)            | 125              |
| Castor Type              | Swivel           |
| Fixing Option            | Plate            |
| Height (mm)              | 155              |
| Wheel Material           | Nylon            |
| Colour / Shore Hardness  | White Nylon      |
| Temperature Resistance   | -30 °C TO +80 °C |
| Bearing Type             | Ball             |
| Load Capacity (kg)       | 200              |
| Tread (mm)               | 37               |
| Swivel Radius (mm)       | 95               |
| Plate Size (mm)          | 105 X 85         |
| Hole Centres (mm)        | 80 X 60          |
| Top Plate Thickness (mm) | 2.5              |
| Fork Thickness (mm)      | 2                |
| To Suit Fixing Bolt (mm) | 8                |

### BIL GROUP LTD

Porte Marsh Road, Calne, Wiltshire, SN11 9BW

Registered in England No: 2603821

VAT Reg: GB572705729

