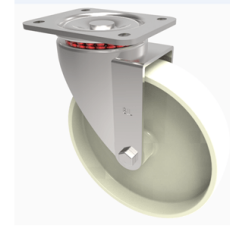


Nylon Plate Swivel Castor 125mm 300kg Load

Product code: BZH125NYHT



Pressed steel swivel castor with a top plate fixing fitted with a off white nylon wheel with a Plain Bore . Wheel diameter 125mm, tread width 35mm, overall height 155mm, top plate 105mm x 86mm, hole centres 80mm x 60mm Load capacity 300kg at a maximum 130c

Diameter (mm)	125
Fixing Option	Plate
Castor Type	Swivel
Plate Size (mm)	105 x 86
Hole Centres (mm)	80 X 60
To Suit Fixing Bolt (mm)	8
Height (mm)	155
Bearing Type	Plain
Swivel Radius (mm)	104
Wheel Material	Nylon
Colour / Shore Hardness	White High Temperature Nylon
Temperature Resistance	-30 °C to +130 °C
Load Capacity (kg)	230
Tread (mm)	40
Top Plate Thickness (mm)	4
Fork Thickness (mm)	4