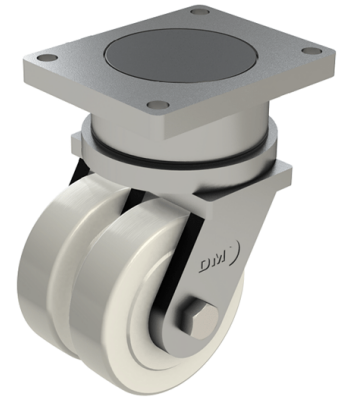


## Nylon Plate Swivel Castor 125mm 3200kg Load

**Product code: T125NYBJ**

**POA** Heavy duty fabricated twin wheel swivel castor fitted with 2 x cast machined nylon wheels with ball bearings, Wheel diameter 125mm, Tread width 55mm x 2, Overall height 215mm, Top plate 250mm x 200mm, Hole centres 210mm x 160mm, Load capacity 3200kg **\*\*MANUFACTURED TO ORDER\*\***



Diameter (mm)	125
Fixing Option	Plate
Castor Type	Swivel
Bearing Type	Ball
Plate Size (mm)	250 x 200
Hole Centres (mm)	250 x 200
Height (mm)	215
Swivel Radius (mm)	108
To Suit Fixing Bolt (mm)	16
Wheel Material	Nylon
Colour / Shore Hardness	White Nylon
Temperature Resistance	&quot;-30 °C TO +80 °C
Tread (mm)	2 x 55
Load Capacity (kg)	3200