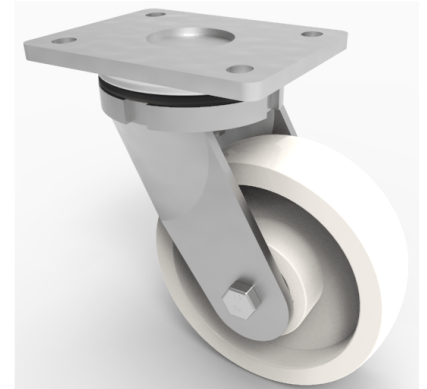


Nylon Plate Swivel Castor 125mm 750kg Load

Product code: BZSAB125LNYB

Fabricated zinc plated swivel castor with plate fixing fitted with a white nylon wheel with roller bearings. Wheel diameter 125mm, tread width 45mm, overall height 175mm, plate size 138mm x 110mm, hole centres 105mm x 80mm/75mm. Load capacity 750kg.



Diameter (mm)	125
Fixing Option	Plate
Castor Type	Swivel
Bearing Type	Roller
Height (mm)	175
Plate Size (mm)	138 x 110
Hole Centres (mm)	105 x 80
To Suit Fixing Bolt (mm)	10
Wheel Material	Nylon
Colour / Shore Hardness	White Nylon
Temperature Resistance	-30 °C TO +80 °C
Top Plate Thickness (mm)	8
Fork Thickness (mm)	6
Swivel Radius (mm)	120
Load Capacity (kg)	750
Tread (mm)	45

BIL GROUP LTD

Porte Marsh Road, Calne, Wiltshire, SN11 9BW

Registered in England No: 2603821

VAT Reg: GB572705729

