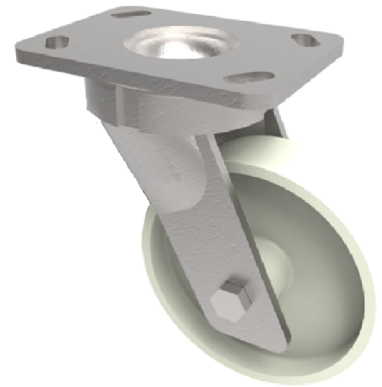


Nylon Plate Swivel Castor 125mm 750kg Load

Product code: BZK125NYB



Fabricated swivel castor with a top plate fixing with a white nylon wheel with roller bearing. Wheel diameter 125mm, tread width 45mm, overall height 177mm, plate size 150mm x 110mm, hole centres 105mm x 80mm or 121mm x 59mm. Load capacity 750kg.

Diameter (mm)	125
Fixing Option	Plate
Castor Type	Swivel
Bearing Type	Roller
Height (mm)	177
Plate Size (mm)	150 x 110
Hole Centres (mm)	105/121 x 80/59
To Suit Fixing Bolt (mm)	12
Wheel Material	Nylon
Colour / Shore Hardness	White Nylon
Temperature Resistance	-30 °C TO +80 °C
Top Plate Thickness (mm)	7.5
Fork Thickness (mm)	6
Swivel Radius (mm)	115
Load Capacity (kg)	750
Tread (mm)	45